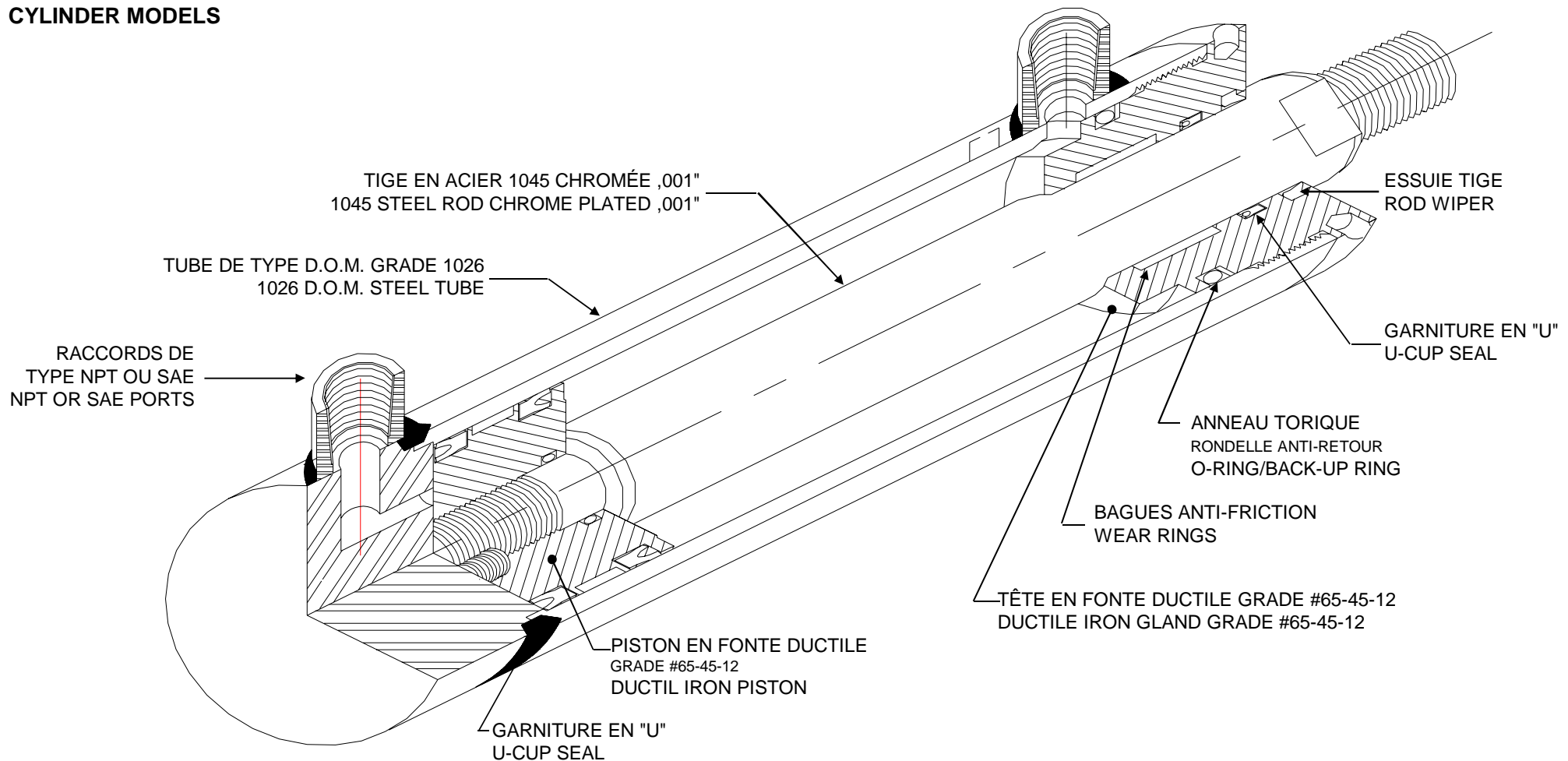


SPÉCIFICATIONS GÉNÉRALES/GENERAL INFORMATION



VOICI UNE ILLUSTRATION TYPE
DES VÉRINS INDUSTRIELS

THIS DIAGRAM SHOWS THE GENERAL
ARRANGEMENT FOR THE INDUSTRIAL
CYLINDER MODELS



COMMENT RÉDIGER UNE COMMANDE HOW TO ORDER



VERIN CYLINDER	L-1	2 1/2"	10	1 1/4"	NC	1/2" NPT	X	W	RS
-------------------	-----	--------	----	--------	----	----------	---	---	----

MODÈLE/MODEL
VOIR PAGE 3
SEE PAGE 3

ALÉSAGE
BORE

COURSE
STROKE

DIAMÈTRE DE LA TIGE
ROD DIAMETER

DIMENSIONS "X" ET "W"
POUR ATTACHEMENT DE
TYPE L-8 (PATTES)

"X" AND "W"
DIMENSIONS FOR L-8
TYPE ATTACHMENT

DIMENSIONS "RS" POUR
ATTACHEMENT DE TYPE L-6
(TOURILLON)

"RS" DIMENSION FOR L-6 TYPE
ATTACHMENT (TRUNNION)

TYPE ET GROSSEUR DES
ENTRÉES D'HUILE

TYPE AND SIZE OF PORTS

COUSSINS/CUSHIONS

NC- SANS COUSSIN (STD)
NON-CUSHIONED

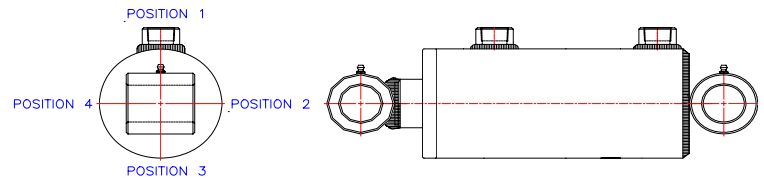
CR- COUSSIN À LA TÊTE
CUSHION AT ROD END

CB- COUSSIN AU FOND
CUSHION AT BOTTOM END

CC- COUSSIN AUX DEUX BOUTS
CUSHION AT BOTH ENDS

POSITION DES ENTRÉES D'HUILE VUES AU BOUT DE
LA TIGE (GOUPILLE EN POSITION HORIZONTALE)

POSITION OF PORTS VIEWED FROM THE ROD END
(PIN IN HORIZONTAL POSITION)



(TABLE 1) TIGES DISPONIBLES/AVAILABLE RODS

ALÉSAGE BORE	DIAMÈTRE DE TIGE/ROD SIZE																
	3/4"	1"	1 1/4"	1 3/8"	1 1/2"	1 3/4"	2"	2 1/4"	2 1/2"	2 3/4"	3"	3 1/2"	4"	4 1/2"	5"	6"	
1 1/2"	X																
2"		X															
2 1/2"			X														
3"					X												
3 1/2"						X											
4"							X										
4 1/2"								X									
5"									X								
6"									X								
7"										X							
8"											X						
10"													X			X	

TIGES/RODS

X	STANDARD
	DISPONIBLE/AVAILABLE

COUSSINS/CUSHIONS

B	FOND SEULEMENT/BOTTOM ONLY
2	DEUX BOUTS/BOTH ENDS

(TABLE 2) COUSSINS DISPONIBLES/AVAILABLE CUSHIONS

ALÉSAGE BORE	DIAMÈTRE DE TIGE/ROD SIZE																
	3/4"	1"	1 1/4"	1 3/8"	1 1/2"	1 3/4"	2"	2 1/4"	2 1/2"	2 3/4"	3"	3 1/2"	4"	4 1/2"	5"	6"	
1 1/2"																	
2"		2	2	2	B												
2 1/2"		2	2	B	2	B	B										
3"			B		2	2	2		B								
3 1/2"			B		2	2	2		B								
4"					B	2	2		2		B						
4 1/2"							2	2	2	B	B						
5"							B		2		2	2					
6"							B		2		2	2	B				
7"											2	2	2	2	B		
8"												B	2	2	2	B	
10"													2		2	2	

(TABLE 4) COUSSINS/CUSHIONS

AJOUTER À LA LONGUEUR FERMÉE/ADD TO CLOSED LENGTH

**(TABLE 3) PRESSIONS D'OPÉRATION *
WORKING PRESSURE ***

ALÉSAGE BORE	PRESSION PRESSURE
1 1/2"	3000 PSI
2"	3000 PSI
2 1/2"	3000 PSI
3"	3000 PSI
3 1/2"	3000 PSI
4"	3000 PSI
4 1/2"	3000 PSI
5"	3000 PSI
6"	3000 PSI
7"	2700 PSI
8"	3000 PSI
10"	2500 PSI

 * BASÉ SUR UN FACTEUR
DE SÉCURITÉ DE 3/1
EN ÉCLATEMENT



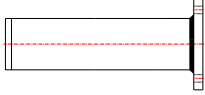

 * BASED ON A SAFETY
FACTOR OF 3/1 ON
THE BURSTING PRESSURE

A B L O E R S E	COUSSIN TÊTE	COUSSIN AU FOND			COUSSIN AUX 2 BOUTS		
		L-1 L-2	L-3 L-6	L-4	L-1 L-2	L-3 L-6	L-4
		L-5 L-9	L-8 L-10		L-5 L-9	L-8 L-10	
1 1/2"	3/4"	0	0	0	3/4"	0	0
2"	1"	0	0	0	1"	0	0
2 1/2"	1 1/4"	0	-1/4"	0	1 1/4"	1	0
3"	1 1/4"	0	-1/4"	0	1 1/4"	1 1/4"	0
3 1/2"	1 1/2"	0	-1/4"	1/2"	1 1/2"	1 1/4"	2"
4"	1 1/2"	0	-1/4"	0	1 1/2"	1 1/4"	0
4 1/2"	1 1/2"	0	-1/4"	0	1 1/2"	1 1/4"	0
5"	1 1/2"	0	0	1/2"	1 1/2"	0	2"
6"	1 1/2"	0	0	3/4"	1 1/2"	0	2 1/4"
7"	1 1/2"	1/4"	0	7/8"	1 1/2"	0	2 3/8"
8"	1 1/2"	1	0	1 1/8"	2 1/2"	0	2 5/8"
10"	2"	1"	0	7/8"	3"	0	2 7/8"

La gamme de vérins industriels HYCO est conçu pour des applications rigoureuses qui requièrent des pressions d'opération pouvant aller jusqu'à 3000 PSI et dont la conception peut être adapté pour votre application spéciale par notre équipe d'ingénierie.

HYCO's line of industrial cylinders are designed for applications that require working pressures up to 3000 PSI. The design of these rugged cylinders can be adapted to your application by our engineering team.

ATTACHEMENTS DISPONIBLE/AVAILABLE ATTACHMENTS

TUBE	TIGE/ROD								
		L-1	L-2	L-24	L-25	L-26	L-27	L-29	L-20
		L-31	L-3	L-34	L-35	L-36	L-37	L-39	L-30
		L-41	L-4	L-44	L-45	L-46	L-47	L-49	L-40
		L-51	L-5	L-54	L-55	L-56	L-57	L-59	L-50
		L-61	L-6	L-64	L-65	L-66	L-67	L-69	L-60
		L-71	L-7	L-74	L-75	L-76	L-77	L-79	L-70
		L-81	L-8	L-84	L-85	L-86	L-87	L-89	L-80
		L-91	L-92	L-94	L-95	L-96	L-97	L-9	L-90
		L-11	L-12	L-14	L-15	L-16	L-17	L-19	L-10

STANDARD CATALOGUE/CATALOG STANDARDS

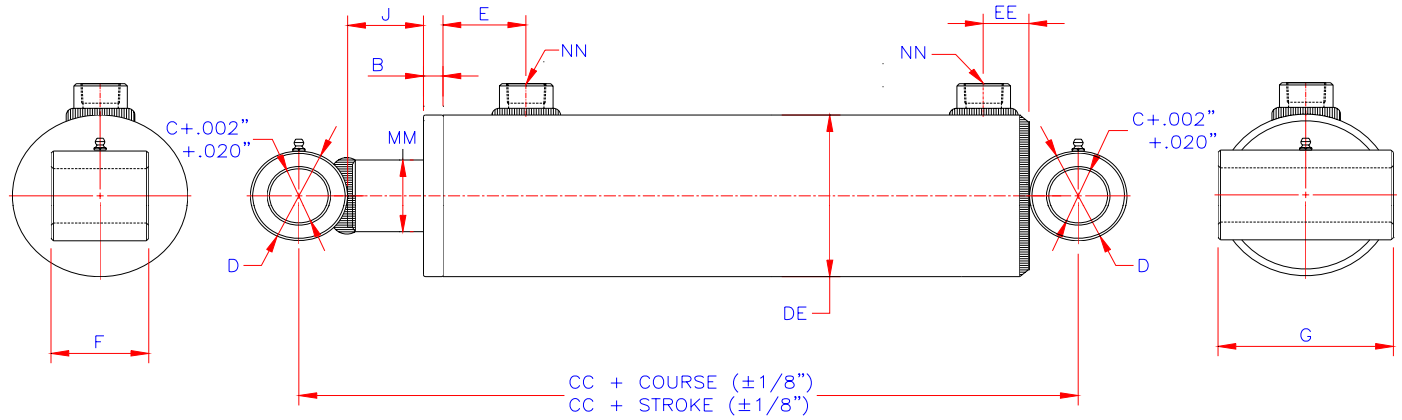
OPTIONS DISPONIBLES

- * Coussins non-ajustables au fond, à la tête ou aux 2 bouts
- * Entretoise (stop tube) pour les longues courses
- * Tiges en acier inoxydable ou en acier trempé
- * Entrées d'huile au même bout
- * Bagues de bronze
- * Soupapes d'équilibrage et clapet pilote
- * Joints d'étanchéité spéciaux
- * Peinture époxy

AVAILABLE OPTIONS

- * Non-adjustable cushions at the bottom end, at the gland end or on both ends
- * Stop tube for cylinders with long strokes
- * Stainless steel rods or induction hardened rods
- * Oil fittings on the same end
- * Bronze bushings
- * Counter balance and pilot operated check valves
- * Special seal kits
- * Epoxy paint

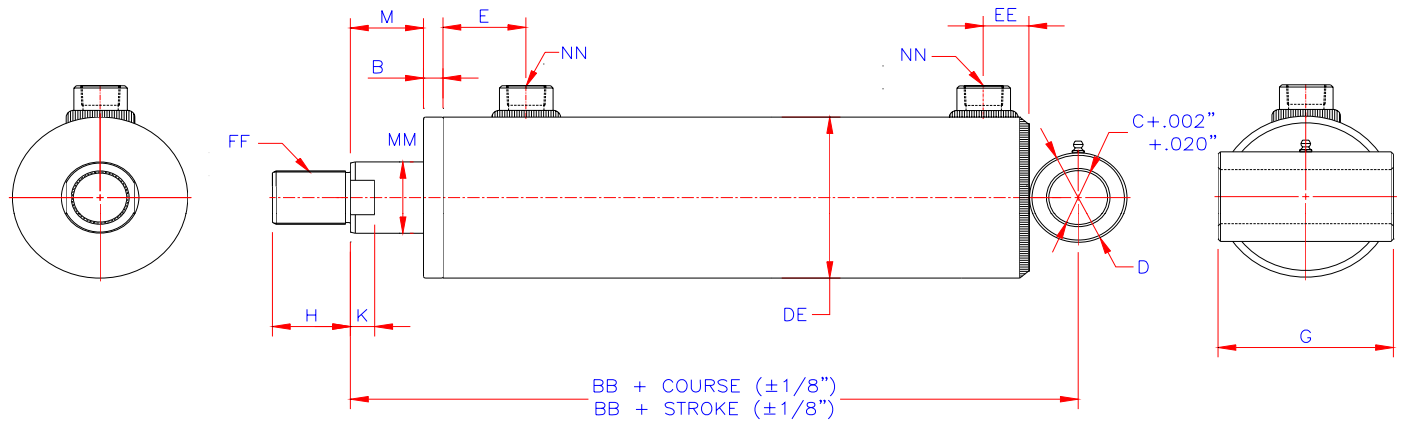
L-1 BAGUE AUX DEUX BOUTS BUSHING ON BOTH ENDS



ALÉSAGE BORE	1 1/2"	2"	2 1/2"	3"	3 1/2"	4"	4 1/2"	5"	6"	7"	8"	10"
B	1/2"	1/2"	1/2"	1/2"	1/2"	1/2"	1/2"	1/2"	5/8"	5/8"	5/8"	5/8"
C	5/8"	3/4"	7/8"	1"	1 1/4"	1 1/2"	1 1/2"	1 3/4"	2"	2 1/4"	2 1/2"	3"
D	1"	1 1/4"	1 1/2"	1 1/2"	2"	2 1/2"	2 1/2"	3 1/4" 2 3/4"	3 1/2" 3"	4" 3 1/4"	4"	4 1/2"
E	1 1/2"	1 11/16"	1 13/16"	1 13/16"	2 1/16"	2 1/8"	2 1/8"	2 3/4"	2 13/16"	2 13/16"	2 13/16"	3 7/16"
F	1 1/4"	1 1/2"	1 3/4"	2"	2 1/4"	2 1/2"	3"	3 1/4"	3 1/4"	3 3/4"	5"	6"
G	2 1/4"	2 1/2"	3"	3 1/2"	4"	4 1/2"	5 1/4"	5 3/4"	7"	8"	9"	12"
J	1 3/8"	1"	1 1/2"	1 1/2"	1 1/2"	1 1/4"	1 1/4"	1"	1 5/8"	1 5/8"	2 1/4"	2 3/4"
CC	7"	7 3/4"	9"	9"	10 1/4"	10 3/4"	11"	12 1/4"	13 3/4"	14 1/4"	15 3/8"	17 7/8"
DE	1 7/8"	2 3/8"	3"	3 1/2"	4"	4 1/2"	5 1/4"	5 3/4"	6 3/4"	7 3/4"	9"	11"
EE	13/16"	15/16"	1 1/16"	1 1/16"	1 1/16"	1 3/16"	1 3/16"	7/8"	1"	1 1/8"	7/8"	7/8"
MM	3/4"	1"	1 1/4"	1 1/2"	1 3/4"	2"	2 1/4"	2 1/2"	2 1/2"	3"	4"	5"
NN	3/8" NPT SAE-6	3/8" NPT SAE-6	1/2" NPT SAE-8	1/2" NPT SAE-8	1/2" NPT SAE-8	3/4" NPT SAE-12	3/4" NPT SAE-12	1" NPT SAE-16	1" NPT SAE-16	1 1/4" NPT SAE-20	1 1/4" NPT SAE-20	1 1/2" NPT SAE-24

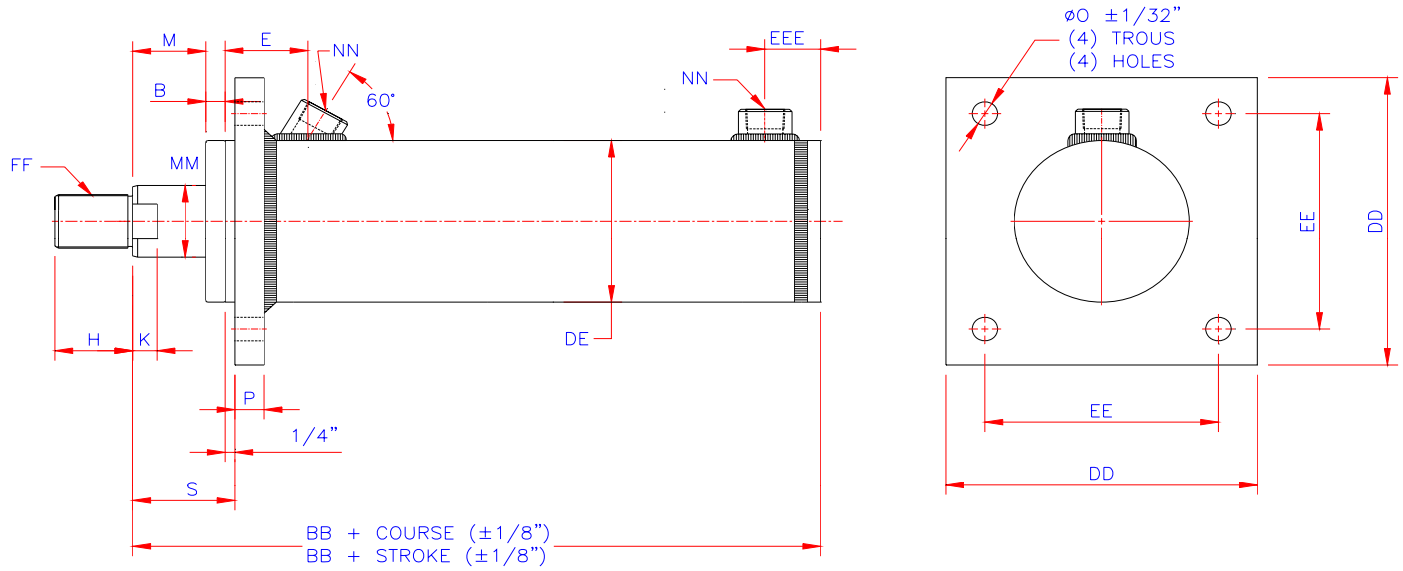
L-2 BAGUE AU FOND/TIGE FILETÉE

BUSHING ON BOTTOM END/TREADED ROD



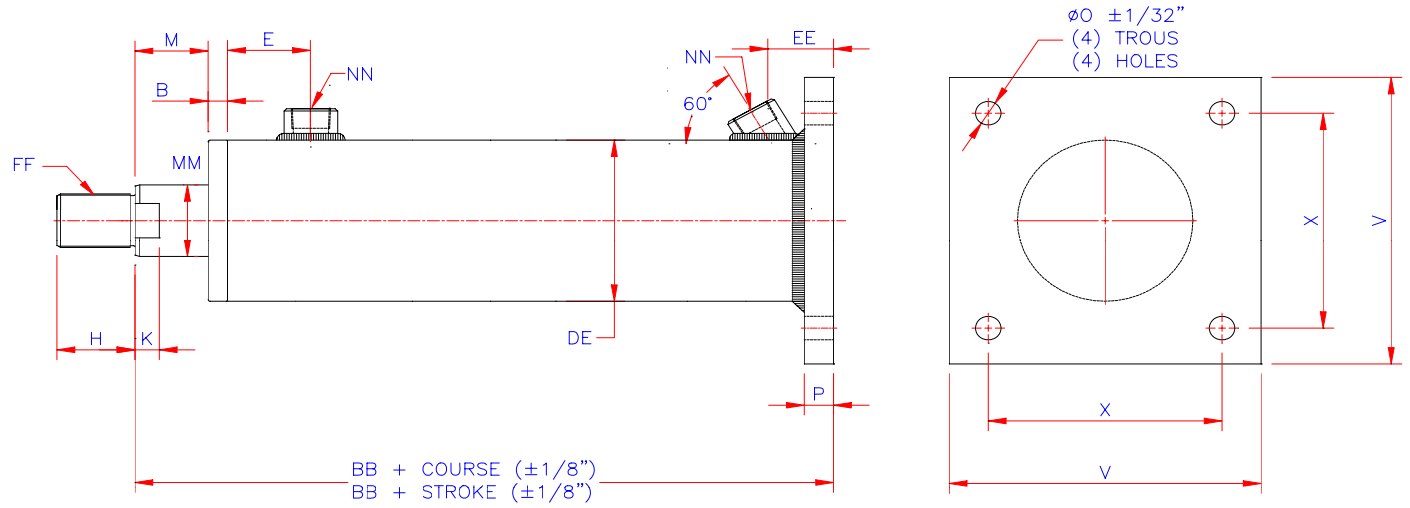
ALÉSAGE BORE	1 1/2"	2"	2 1/2"	3"	3 1/2"	4"	4 1/2"	5"	6"	7"	8"	10"
B	1/2"	1/2"	1/2"	1/2"	1/2"	1/2"	1/2"	1/2"	5/8"	5/8"	5/8"	5/8"
C	5/8"	3/4"	7/8"	1"	1 1/4"	1 1/2"	1 1/2"	1 3/4"	2"	2 1/4"	2 1/2"	3"
D	1"	1 1/4"	1 1/2"	1 1/2"	2"	2 1/2"	2 1/2"	2 3/4"	3"	3 1/4"	4"	4 1/2"
E	1 1/2"	1 11/16"	1 13/16"	1 13/16"	2 1/16"	2 1/8"	2 1/8"	2 3/4"	2 13/16"	2 13/16"	2 13/16"	3 7/8"
G	2 1/4"	2 1/2"	3"	3 1/2"	4"	4 1/2"	5 1/4"	5 3/4"	7"	8"	9"	12"
H	3/4"	1"	1 1/4"	1 1/2"	1 3/4"	2"	2 1/4"	2 1/2"	2 1/2"	3"	3 1/2"	4"
K	3/8"	1/2"	1/2"	5/8"	5/8"	5/8"	3/4"	3/4"	3/4"	7/8"	7/8"	7/8"
M	7/8"	3/4"	3/4"	3/4"	3/4"	3/4"	1"	7/8"	1"	1 1/4"	1 1/4"	1 1/4"
BB	6"	6 7/8"	7 1/2"	7 1/2"	8 1/2"	9"	9 1/2"	10 1/2"	11 3/8"	11 7/8"	12 3/8"	14 1/8"
DE	1 7/8"	2 3/8"	3"	3 1/2"	4"	4 1/2"	5 1/4"	5 3/4"	6 3/4"	7 3/4"	9"	11"
EE	13/16"	15/16"	1 1/16"	1 1/16"	1 1/16"	1 3/16"	1 3/16"	7/8"	1"	1 1/8"	7/8"	7/8"
FF	5/8"-18	3/4"-16	7/8"-14	1"-14	1 1/4"-12	1 1/2"-12	1 3/4"-12	2"-12	2"-12	2 1/4"-12	2 1/2"-12	3"-12
MM	3/4"	1"	1 1/4"	1 1/2"	1 3/4"	2"	2 1/4"	2 1/2"	2 1/2"	3"	4"	5"
NN	3/8" NPT SAE-6	3/8" NPT SAE-6	1/2" NPT SAE-8	1/2" NPT SAE-8	1/2" NPT SAE-8	3/4" NPT SAE-12	3/4" NPT SAE-12	1" NPT SAE-16	1" NPT SAE-16	1 1/4" NPT SAE-20	1 1/4" NPT SAE-20	1 1/2" NPT SAE-24

L-3 PLAQUE À LA TÊTE/TIGE FILETÉE FLANGE ON GLAND END/THREADED ROD



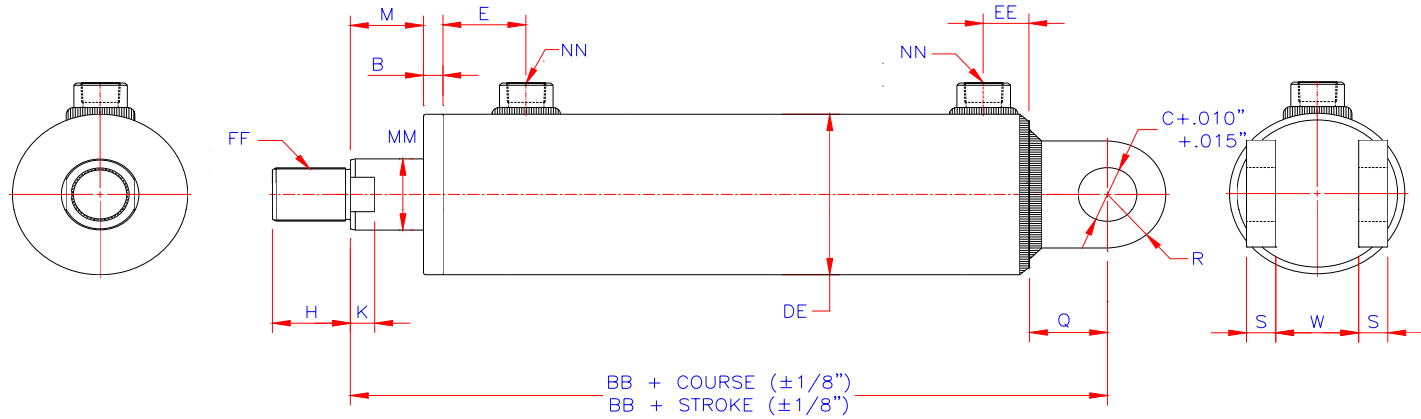
ALÉSAGE BORE	1 1/2"	2"	2 1/2"	3"	3 1/2"	4"	4 1/2"	5"	6"	7"	8"	10"
B	1/2"	1/2"	1/2"	1/2"	1/2"	1/2"	1/2"	1/2"	5/8"	5/8"	5/8"	5/8"
E	1 1/2"	1 11/16"	1 13/16"	1 13/16"	2 1/16"	2 1/8"	2 1/8"	2 3/4"	2 13/16"	2 13/16"	2 13/16"	3 7/16"
H	3/4"	1"	1 1/4"	1 1/2"	1 3/4"	2"	2 1/4"	2 1/2"	2 1/2"	3"	3 1/2"	4"
K	3/8"	1/2"	1/2"	5/8"	5/8"	5/8"	3/4"	3/4"	3/4"	7/8"	7/8"	7/8"
M	1/2"	3/4"	3/4"	3/4"	3/4"	3/4"	1"	1"	1"	1 1/4"	1 1/4"	1 1/4"
O	3/8"	3/8"	1/2"	1/2"	5/8"	5/8"	5/8"	3/4"	1"	1 1/4"	1 1/2"	1 3/4"
P	1/2"	1/2"	5/8"	5/8"	3/4"	3/4"	7/8"	1"	1 1/4"	1 1/2"	1 1/2"	2"
S	1 1/4"	1 1/2"	1 1/2"	1 1/2"	1 1/2"	1 1/2"	1 3/4"	1 3/4"	1 7/8"	2 1/8"	2 1/8"	2 1/8"
BB	5 1/8"	6 1/4"	7"	7"	7 3/4"	8"	8 1/2"	9 1/4"	9 7/8"	10 1/4"	10 3/8"	11 7/8"
DD	4"	4"	6"	6"	8"	8"	10"	10"	11"	12"	13"	15"
DE	1 7/8"	2 3/8"	3"	3 1/2"	4"	4 1/2"	5 1/4"	5 3/4"	6 3/4"	7 3/4"	9"	11"
EE	3"	3"	4 1/2"	4 1/2"	6"	6"	8"	8"	8 1/2"	9 1/2"	10"	11 1/2"
EEE	13/16"	15/16"	1 5/16"	1 5/16"	1 5/16"	1 7/16"	1 7/16"	7/8"	1"	1 1/8"	7/8"	7/8"
FF	5/8"-18	3/4"-16	7/8"-14	1"-14	1 1/4"-12	1 1/2"-12	1 3/4"-12	2"-12	2"-12	2 1/4"-12	2 1/2"-12	3"-12
MM	3/4"	1"	1 1/4"	1 1/2"	1 3/4"	2"	2 1/4"	2 1/2"	2 1/2"	3"	4"	5"
NN	3/8" NPT SAE-6	3/8" NPT SAE-6	1/2" NPT SAE-8	1/2" NPT SAE-8	1/2" NPT SAE-8	3/4" NPT SAE-12	3/4" NPT SAE-12	1" NPT SAE-16	1" NPT SAE-16	1 1/4" NPT SAE-20	1 1/4" NPT SAE-20	1 1/2" NPT SAE-24

L-4 PLAQUE AU FOND/TIGE FILETÉE FLANGE ON BOTTOM END/THREADED ROD



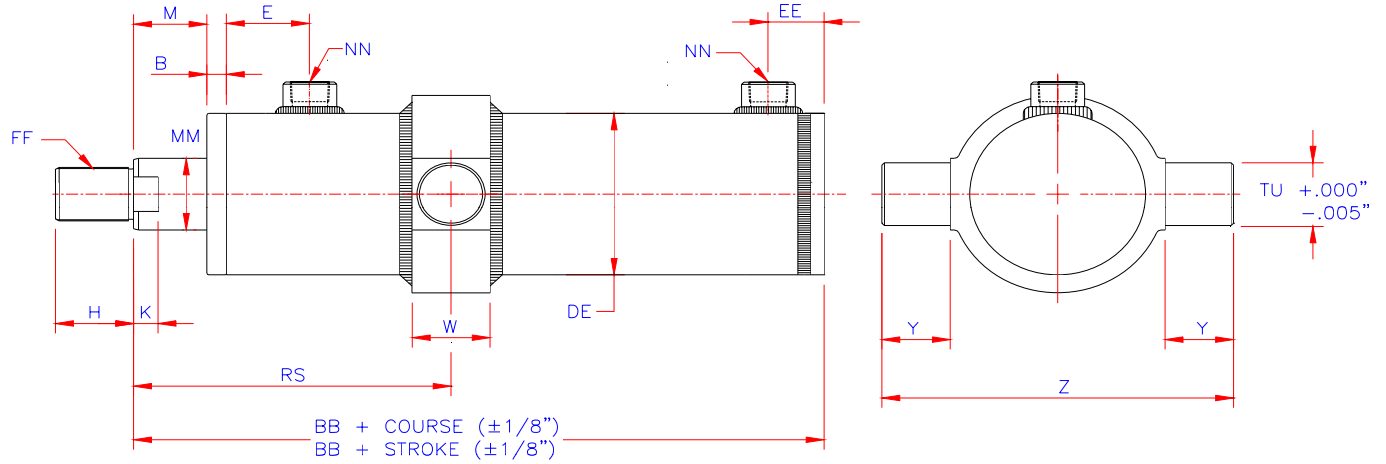
ALÉSAGE BORE	1 1/2"	2"	2 1/2"	3"	3 1/2"	4"	4 1/2"	5"	6"	7"	8"	10"
B	1/2"	1/2"	1/2"	1/2"	1/2"	1/2"	1/2"	1/2"	5/8"	5/8"	5/8"	5/8"
E	1 1/2"	1 11/16"	1 13/16"	1 13/16"	2 1/16"	2 1/8"	2 1/8"	2 3/4"	2 13/16"	2 13/16"	2 13/16"	3 7/16"
H	3/4"	1"	1 1/4"	1 1/2"	1 3/4"	2"	2 1/4"	2 1/2"	2 1/2"	3"	3 1/2"	4"
K	3/8"	1/2"	1/2"	5/8"	5/8"	5/8"	3/4"	3/4"	3/4"	7/8"	7/8"	7/8"
M	3/4"	1"	1 1/4"	1 1/2"	1 3/4"	2"	2 1/4"	2 1/2"	2 1/2"	3"	4"	5"
O	3/8"	3/8"	1/2"	1/2"	5/8"	5/8"	5/8"	3/4"	1"	1 1/4"	1 1/2"	1 3/4"
P	1/2"	1/2"	5/8"	5/8"	3/4"	3/4"	7/8"	1"	1 1/4"	1 1/2"	1 1/2"	2"
V	4"	4"	6"	6"	8"	8"	10"	10"	11"	12"	13"	15"
X	3"	3"	4 1/2"	4 1/2"	6"	6"	8"	8"	8 1/2"	9 1/2"	10"	11 1/2"
BB	5 1/2"	6 1/4"	6 7/8"	6 7/8"	7 3/4"	8"	8 5/8"	9 3/4"	10 3/8"	11 1/8"	11 3/4"	14"
DE	1 7/8"	2 3/8"	3"	3 1/2"	4"	4 1/2"	5 1/4"	5 3/4"	6 3/4"	7 3/4"	9"	11"
EE	7/8"	1 1/16"	1 7/16"	1 7/16"	1 9/16"	1 11/16"	1 13/16"	1 7/8"	2"	2 1/2"	2 5/8"	3 1/4"
FF	5/8"-18	3/4"-16	7/8"-14	1"-14	1 1/4"-12	1 1/2"-12	1 3/4"-12	2"-12	2"-12	2 1/4"-12	2 1/2"-12	3"-12
MM	7/8"	3/4"	3/4"	3/4"	3/4"	3/4"	1"	1"	1"	1 1/4"	1 1/4"	1 1/4"
NN	3/8" NPT SAE-6	3/8" NPT SAE-6	1/2" NPT SAE-8	1/2" NPT SAE-8	1/2" NPT SAE-8	3/4" NPT SAE-12	3/4" NPT SAE-12	1" NPT SAE-16	1" NPT SAE-16	1 1/4" NPT SAE-20	1 1/4" NPT SAE-20	1 1/2" NPT SAE-24

L-5 TENON FEMELLE AU FOND/TIGE FILETÉE FEMALE CLEVIS ON BOTTOM END/THREADED ROD



ALÉSAGE BORE	1 1/2"	2"	2 1/2"	3"	3 1/2"	4"	4 1/2"	5"	6"	7"	8"	10"
B	1/2"	1/2"	1/2"	1/2"	1/2"	1/2"	1/2"	1/2"	5/8"	5/8"	5/8"	5/8"
C	5/8"	3/4"	7/8"	1"	1 1/4"	1 1/2"	1 1/2"	1 3/4"	2"	2 1/4"	2 1/2"	3"
E	1 1/2"	1 11/16"	1 13/16"	1 13/16"	2 1/16"	2 1/8"	2 1/8"	2 3/4"	2 13/16"	2 13/16"	2 13/16"	3 7/16"
H	3/4"	1"	1 1/4"	1 1/2"	1 3/4"	2"	2 1/4"	2 1/2"	2 1/2"	3"	3 1/2"	4"
K	3/8"	1/2"	1/2"	5/8"	5/8"	5/8"	3/4"	3/4"	3/4"	7/8"	7/8"	7/8"
M	1/2"	3/4"	3/4"	3/4"	3/4"	3/4"	1"	1"	1"	1 5/8"	2 3/8"	2 7/8"
Q	1 3/8"	1"	1 1/4"	1 1/2"	1 3/4"	2"	2 1/4"	2 1/2"	2 1/2"	3"	3 1/2"	4"
R	3/4"	3/4"	7/8"	1 1/8"	1 1/4"	1 1/2"	1 1/2"	1 3/4"	2"	2"	2 1/2"	3"
S	1/2"	1/2"	1/2"	1/2"	5/8"	3/4"	1"	1 1/4"	1 1/4"	1 1/2"	1 1/2"	2"
W	13/16"	1 1/16"	1 5/16"	1 5/8"	1 5/8"	2 1/8"	2 1/8"	2 5/8"	2 5/8"	3 1/8"	3 1/8"	4 1/8"
BB	6 1/2"	7 1/4"	8"	8 1/4"	9 1/4"	9 3/4"	10 1/2"	11 3/4"	12 3/8"	13 5/8"	15"	17 1/2"
DE	1 7/8"	2 3/8"	3"	3 1/2"	4"	4 1/2"	5 1/4"	5 3/4"	6 3/4"	7 3/4"	9"	11"
EE	7/16"	15/16"	1 1/16"	1 1/16"	1 1/16"	1 3/16"	1 3/16"	7/8"	1"	1 1/8"	7/8"	7/8"
FF	5/8"-18	3/4"-16	7/8"-14	1"-14	1 1/4"-12	1 1/2"-12	1 3/4"-12	2"-12	2"-12	2 1/4"-12	2 1/2"-12	3"-12
MM	3/4"	1"	1 1/4"	1 1/2"	1 3/4"	2"	2 1/4"	2 1/2"	2 1/2"	3"	4"	5"
NN	3/8" NPT SAE-6	3/8" NPT SAE-6	1/2" NPT SAE-8	1/2" NPT SAE-8	1/2" NPT SAE-8	3/4" NPT SAE-12	3/4" NPT SAE-12	1" NPT SAE-16	1" NPT SAE-16	1 1/4" NPT SAE-20	1 1/4" NPT SAE-20	1 1/2" NPT SAE-24

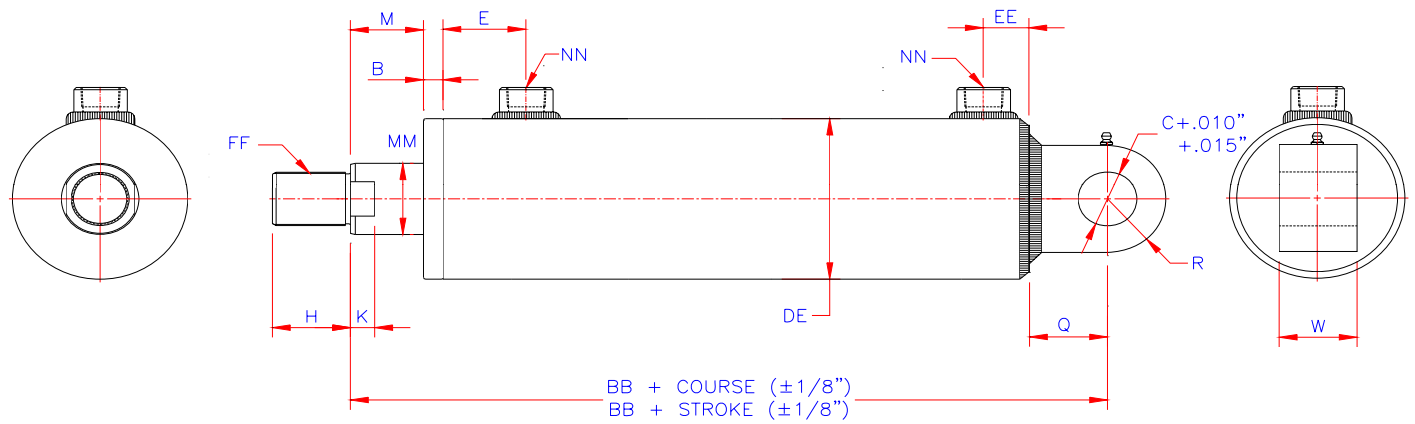
L-6 TOURILLON AU TUBE/TIGE FILETÉE TRUNNION ON TUBE/THREADED ROD



ALÉSAGE BORE	1 1/2"	2"	2 1/2"	3"	3 1/2"	4"	4 1/2"	5"	6"	7"	8"	10"
B	1/2"	1/2"	1/2"	1/2"	1/2"	1/2"	1/2"	1/2"	5/8"	5/8"	5/8"	5/8"
E	1 1/2"	1 11/16"	1 13/16"	1 13/16"	2 1/16"	2 1/8"	2 1/8"	2 3/4"	2 13/16"	2 13/16"	2 13/16"	3 7/16"
H	3/4"	1"	1 1/4"	1 1/2"	1 3/4"	2"	2 1/4"	2 1/2"	2 1/2"	3"	3 1/2"	4"
K	3/8"	1/2"	1/2"	5/8"	5/8"	5/8"	3/4"	3/4"	3/4"	7/8"	7/8"	7/8"
M	7/8"	3/4"	3/4"	3/4"	3/4"	3/4"	1"	1"	1"	1 1/4"	1 1/4"	1 1/4"
W	1 1/4"	1 1/2"	1 5/8"	1 3/4"	2"	2"	2"	2 1/2"	2 1/2"	3"	3"	4"
Y	1"	1 1/4"	1 3/8"	1 5/8"	1 3/4"	1 3/4"	1 3/4"	2"	2"	2 1/2"	2 1/2"	3 1/2"
Z	5"	5 7/8"	6 3/4"	7 3/4"	8 1/2"	9"	9 3/4"	11"	12"	14 1/4"	15 1/4"	20"
BB	5 1/2"	6 1/4"	7"	7"	7 3/4"	8"	8 1/2"	9 1/4"	9 7/8"	10 1/4"	10 3/8"	11 7/8"
DE	1 7/8"	2 3/8"	3"	3 1/2"	4"	4 1/2"	5 1/4"	5 3/4"	6 3/4"	7 3/4"	9"	11"
EE	13/16"	15/16"	1 5/16"	1 5/16"	1 5/16"	1 7/16"	1 7/16"	7/8"	1"	1 1/8"	7/8"	7/8"
FF	5/8"-18	3/4"-16	7/8"-14	1"-14	1 1/4"-12	1 1/2"-12	1 3/4"-12	2"-12	2"-12	2 1/4"-12	2 1/2"-12	3"-12
MM	3/4"	1"	1 1/4"	1 1/2"	1 3/4"	2"	2 1/4"	2 1/2"	2 1/2"	3"	4"	5"
NN	3/8" NPT SAE-6	3/8" NPT SAE-6	1/2" NPT SAE-8	1/2" NPT SAE-8	1/2" NPT SAE-8	3/4" NPT SAE-12	3/4" NPT SAE-12	1" NPT SAE-16	1" NPT SAE-16	1 1/4" NPT SAE-20	1 1/4" NPT SAE-20	1 1/2" NPT SAE-24
RS	4 1/8"	4"	4 3/4"	5"	5 1/2"	7"	7"	8"	8"	8"	8 1/2"	9 1/2"
TU	1"	1 1/4"	1 3/8"	1 5/8"	1 3/4"	1 3/4"	1 3/4"	2"	2"	2 1/2"	2 1/2"	3 1/2"

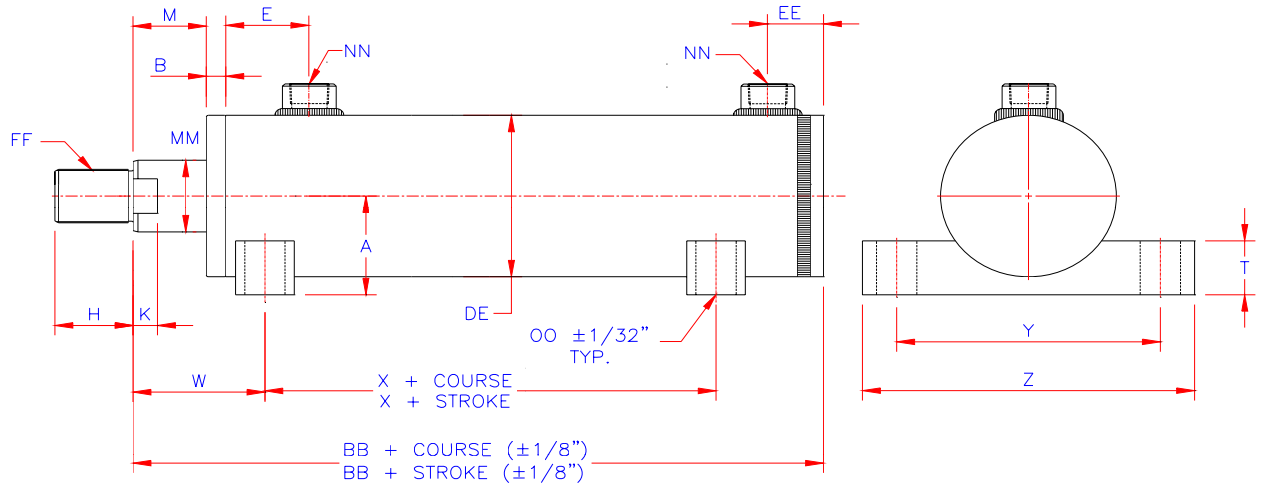
L-7 TENON MÂLE AU FOND/TIGE FILETÉE

MALE CLEVIS ON BOTTOM END/THREADED ROD



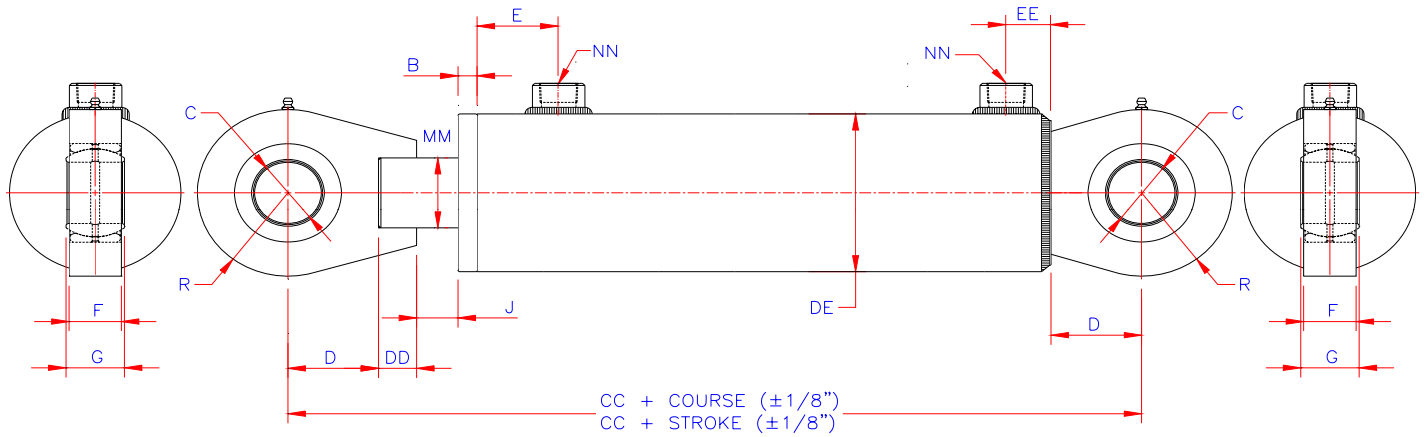
ALÉSAGE BORE	1 1/2"	2"	2 1/2"	3"	3 1/2"	4"	4 1/2"	5"	6"	7"	8"	10"
B	1/2"	1/2"	1/2"	1/2"	1/2"	1/2"	1/2"	1/2"	5/8"	5/8"	5/8"	5/8"
C	5/8"	3/4"	7/8"	1"	1 1/4"	1 1/2"	1 1/2"	1 3/4"	2"	2 1/4"	2 1/2"	3"
E	1 1/2"	1 11/16"	1 13/16"	1 13/16"	2 1/16"	2 1/8"	2 1/8"	2 3/4"	2 13/16"	2 13/16"	2 13/16"	3 7/16"
H	3/4"	1"	1 1/4"	1 1/2"	1 3/4"	2"	2 1/4"	2 1/2"	2 1/2"	3"	3 1/2"	4"
K	3/8"	1/2"	1/2"	5/8"	5/8"	5/8"	3/4"	3/4"	3/4"	7/8"	7/8"	7/8"
M	1/2"	3/4"	3/4"	3/4"	3/4"	3/4"	1"	1"	1"	1 5/8"	2 3/8"	2 7/8"
Q	1 3/8"	1"	1 1/4"	1 1/2"	1 3/4"	2"	2 1/4"	2 1/2"	2 1/2"	3"	3 1/2"	4"
R	3/4"	3/4"	7/8"	1"	1 1/4"	1 1/4"	1 1/2"	1 3/4"	2"	2"	2 1/2"	3"
W	3/4"	1"	1 1/4"	1 1/2"	1 1/2"	2"	2"	2 1/2"	2 1/2"	3"	3"	4"
BB	6 1/2"	7 1/4"	8"	8 1/4"	9 1/4"	9 3/4"	10 1/2"	11 3/4"	12 3/8"	13 5/8"	15"	17 1/2"
DE	1 7/8"	2 3/8"	3"	3 1/2"	4"	4 1/2"	5 1/4"	5 3/4"	6 3/4"	7 3/4"	9"	11"
EE	7/16"	15/16"	1 1/16"	1 1/16"	1 1/16"	1 3/16"	1 3/16"	7/8"	1"	1 1/8"	7/8"	7/8"
FF	5/8"-18	3/4"-16	7/8"-14	1"-14	1 1/4"-12	1 1/2"-12	1 3/4"-12	2"-12	2"-12	2 1/4"-12	2 1/2"-12	3"-12
MM	3/4"	1"	1 1/4"	1 1/2"	1 3/4"	2"	2 1/4"	2 1/2"	2 1/2"	3"	4"	5"
NN	3/8" NPT SAE-6	3/8" NPT SAE-6	1/2" NPT SAE-8	1/2" NPT SAE-8	1/2" NPT SAE-8	3/4" NPT SAE-12	3/4" NPT SAE-12	1" NPT SAE-16	1" NPT SAE-16	1 1/4" NPT SAE-20	1 1/4" NPT SAE-20	1 1/2" NPT SAE-24

L-8 PATTES AU TUBE/TIGE FILETÉE LUGS ON TUBE/TREADED ROD



ALÉSAGE BORE	1 1/2"	2"	2 1/2"	3"	3 1/2"	4"	4 1/2"	5"	6"	7"	8"	10"
A	1 3/8"	1 1/2"	1 7/8"	2 1/4"	2 1/2"	2 3/4"	3"	3 1/4"	4"	4 1/2"	5"	6 1/8"
B	1/2"	1/2"	1/2"	1/2"	1/2"	1/2"	1/2"	1/2"	5/8"	5/8"	5/8"	5/8"
E	1 1/2"	1 11/16"	1 13/16"	1 13/16"	2 1/16"	2 1/8"	2 1/8"	2 3/4"	2 13/16"	2 13/16"	2 13/16"	3 7/16"
H	3/4"	1"	1 1/4"	1 1/2"	1 3/4"	2"	2 1/4"	2 1/2"	2 1/2"	3"	3 1/2"	4"
K	3/8"	1/2"	1/2"	5/8"	5/8"	5/8"	3/4"	3/4"	3/4"	7/8"	7/8"	7/8"
M	7/8"	3/4"	3/4"	3/4"	3/4"	3/4"	1"	1"	1"	1 1/4"	1 1/4"	1 1/4"
T	5/8"	3/4"	1"	1 1/4"	1 1/4"	1 1/2"	1 1/2"	1 1/2"	1 3/4"	2 1/4"	2 1/4"	2 1/4"
W	1 15/16"	1 7/8"	2"	2 1/8"	2 1/8"	2 1/4"	2 1/2"	2 5/8"	2 3/4"	3 1/4"	3 1/4"	3 1/4"
X	2 1/8"	2 1/2"	2 3/4"	2 1/4"	3"	3"	3 1/4"	4"	4 1/4"	3 3/4"	4 3/8"	5 5/8"
Y	3 1/2"	4"	4 7/8"	5 1/2"	6"	6 3/4"	7 1/2"	8 1/4"	9 3/4"	11 1/4"	12 1/4"	15 7/8"
Z	4 1/2"	5"	6 1/4"	6 3/4"	7 1/2"	8 1/2"	9 1/4"	10"	12"	14"	15"	19"
BB	5 1/2"	6 1/4"	7"	7"	7 3/4"	8"	8 1/2"	9 1/4"	9 7/8"	10 1/4"	10 3/8"	11 7/8"
DE	1 7/8"	2 3/8"	3"	3 1/2"	4"	4 1/2"	5 1/4"	5 3/4"	6 3/4"	7 3/4"	9"	11"
EE	13/16"	15/16"	1 5/16"	1 5/16"	1 5/16"	1 7/16"	1 7/16"	7/8"	1"	1 1/8"	7/8"	7/8"
FF	5/8"-18	3/4"-16	7/8"-14	1"-14	1 1/4"-12	1 1/2"-12	1 3/4"-12	2"-12	2"-12	2 1/4"-12	2 1/2"-12	3"-12
MM	3/4"	1"	1 1/4"	1 1/2"	1 3/4"	2"	2 1/4"	2 1/2"	2 1/2"	3"	4"	5"
NN	3/8" NPT SAE-6	3/8" NPT SAE-6	1/2" NPT SAE-8	1/2" NPT SAE-8	1/2" NPT SAE-8	3/4" NPT SAE-12	3/4" NPT SAE-12	1" NPT SAE-16	1" NPT SAE-16	1 1/4" NPT SAE-20	1 1/4" NPT SAE-20	1 1/2" NPT SAE-24
OO	13/32"	15/32"	21/32"	25/32"	25/32"	1 1/32"	1 1/32"	1 1/32"	1 5/16"	1 9/16"	1 9/16"	1 9/16"

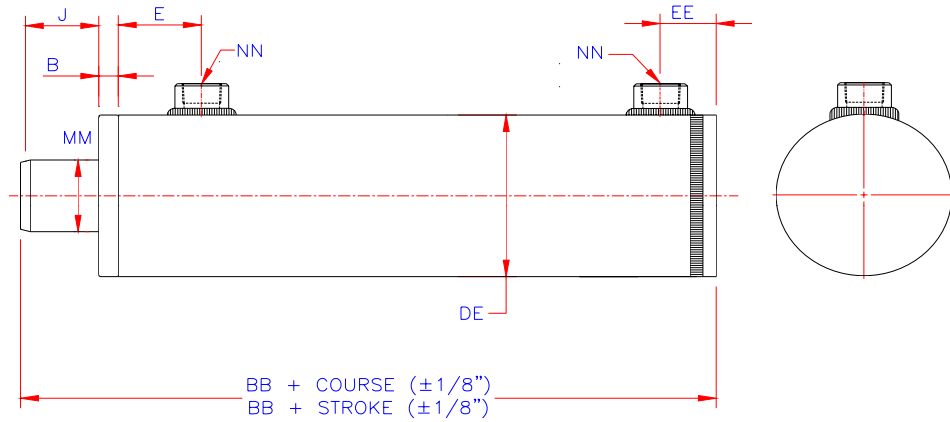
L-9 ROTULES AUX DEUX BOUTS SELF-ALIGN BUSHING ON BOTH ENDS



ALÉSAGE BORE	1 1/2"	2"	2 1/2"	3"	3 1/2"	4"	4 1/2"	5"	6"	7"	8"	10"
B	1/2"	1/2"	1/2"	1/2"	1/2"	1/2"	1/2"	1/2"	5/8"	5/8"	5/8"	5/8"
C	0,6250" -0,0003"	0,7500" -0,0004"	1,0000" -0,0004"	1,2500" -0,0005"	1,5000" -0,0005"	1,7500" -0,0005"	2,0000" -0,0005"	2,5000" -0,0006"	2,5000" -0,0006"	3,0000" -0,0006"	3,5000" -0,0006"	4,0000" -0,0006"
D	1 1/8"	1 3/8"	1 1/2"	1 3/4"	2 1/4"	2 3/8"	2 5/8"	3"	3"	3 1/2"	4"	4 1/2"
E	1 1/2"	1 11/16"	1 13/16"	1 13/16"	2 1/16"	2 1/8"	2 1/8"	2 3/4"	2 13/16"	2 13/16"	2 13/16"	3 7/16"
F	1/2"	5/8"	3/4"	1"	1 1/8"	1 3/8"	1 1/2"	1 7/8"	1 7/8"	2 1/4"	2 5/8"	3"
G	0,547"	0,656"	0,875"	1,093"	1,312"	1,531"	1,750"	2,187"	2,187"	2,625"	3,062"	3,500"
J	3/4"	3/8"	3/4"	3/4"	3/4"	3/4"	3/4"	3/4"	1 1/8"	1"	1 3/8"	1 1/2"
R	7/8"	1 1/4"	1 1/2"	1 3/4"	2"	2 3/8"	2 1/2"	3"	3"	3 1/2"	4 1/2"	5 1/2"
CC	8 1/8"	9 5/8"	10 1/2"	11"	13"	13 1/2"	14 1/4"	16"	17"	18"	20"	23"
DD	1/2"	5/8"	3/4"	3/4"	1"	1"	1"	1"	1"	1"	1 1/2"	1 7/8"
DE	1 7/8"	2 3/8"	3"	3 1/2"	4"	4 1/2"	5 1/4"	5 3/4"	6 3/4"	7 3/4"	9"	11"
EE	13/16"	15/16"	1 1/16"	1 1/16"	1 1/16"	1 3/16"	1 3/16"	7/8"	1"	1 1/8"	7/8"	7/8"
MM	3/4"	1"	1 1/4"	1 1/2"	1 3/4"	2"	2 1/4"	2 1/2"	2 1/2"	3"	4"	5"
NN	3/8" NPT SAE-6	3/8" NPT SAE-6	1/2" NPT SAE-8	1/2" NPT SAE-8	1/2" NPT SAE-8	3/4" NPT SAE-12	3/4" NPT SAE-12	1" NPT SAE-16	1" NPT SAE-16	1 1/4" NPT SAE-20	1 1/4" NPT SAE-20	1 1/2" NPT SAE-24

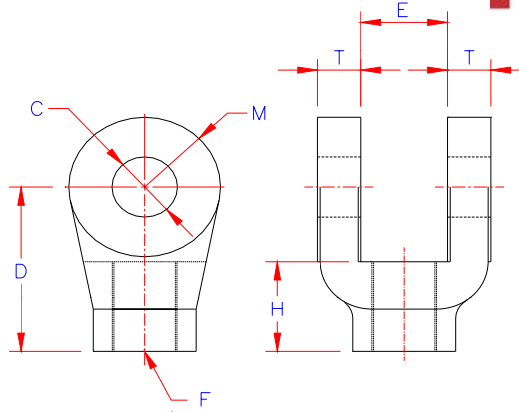
L-10

SANS ATTACHE
NO ATTACHEMENT



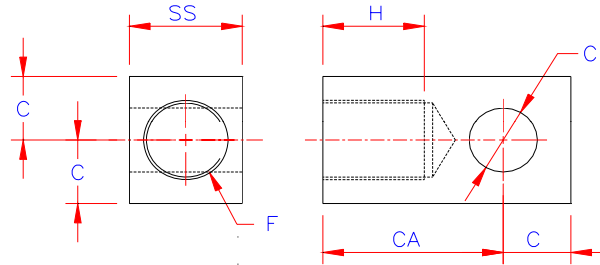
ALÉSAGE BORE	1 1/2"	2"	2 1/2"	3"	3 1/2"	4"	4 1/2"	5"	6"	7"	8"	10"
B	1/2"	1/2"	1/2"	1/2"	1/2"	1/2"	1/2"	1/2"	5/8"	5/8"	5/8"	5/8"
E	1 1/2"	1 11/16"	1 13/16"	1 13/16"	2 1/16"	2 1/8"	2 1/8"	2 3/4"	2 13/16"	2 13/16"	2 13/16"	3 7/16"
J	1 3/8"	1"	1 1/4"	1 1/4"	1 1/4"	1 1/4"	1 1/4"	1 1/2"	2 1/8"	2 1/4"	3"	3 1/2"
BB	6"	6 1/2"	7 1/2"	7 1/2"	8 1/4"	8 1/2"	8 3/4"	9 3/4"	11"	11 1/4"	12 1/8"	14 1/8"
DE	1 7/8"	2 3/8"	3"	3 1/2"	4"	4 1/2"	5 1/4"	5 3/4"	6 3/4"	7 3/4"	9"	11"
EE	13/16"	15/16"	1 1/16"	1 5/16"	1 5/16"	1 7/16"	1 7/16"	7/8"	1"	1 1/8"	7/8"	7/8"
MM	3/4"	1"	1 1/4"	1 1/2"	1 3/4"	2"	2 1/4"	2 1/2"	2 1/2"	3"	4"	5"
NN	3/8" NPT SAE-6	3/8" NPT SAE-6	1/2" NPT SAE-8	1/2" NPT SAE-8	1/2" NPT SAE-8	3/4" NPT SAE-12	3/4" NPT SAE-12	1" NPT SAE-16	1" NPT SAE-16	1 1/4" NPT SAE-20	1 1/4" NPT SAE-20	1 1/2" NPT SAE-24

TENONS/CLEVIS



PIÈCE 101-0050-1 101-0052-0 101-0053-0 101-0054-0 101-0055-0 101-0056-0 101-0058-0 101-0059-0 101-0060-0 101-0061-0 101-0062-0

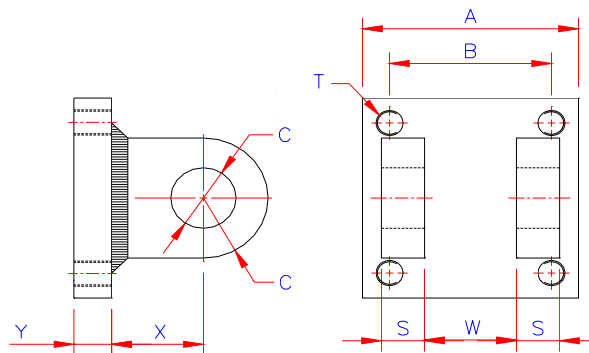
ALÉSAGE BORE	1 1/2"	2"	2 1/2"	3"	3 1/2"	4" 4 1/2"	5"	6"	7"	8"	10"
C	1/2"	3/4"	7/8"	1"	1 1/4"	1 1/2"	1 3/4"	2"	2 1/4"	2 1/2"	3"
D	1 7/8"	2 3/8"	2 3/8"	3 1/8"	3 1/4"	4 1/8"	5"	5"	6 1/4"	6 3/4"	7 3/4"
E	9/16"	1 5/16"	1 5/16"	1 5/8"	1 5/8"	2 1/8"	2 5/8"	2 5/8"	3 1/8"	3 1/8"	4 1/8"
F	5/8"-18	3/4"-16	7/8"-14	1"-14	1 1/4"-12	1 1/2"-12	2"-12	2"-12	2 1/4"-12	2 1/2"-12	3"-12
H	1/2"	1"	1 1/4"	1 5/8"	1 3/4"	2 1/4"	2 1/2"	2 1/2"	3"	3 1/2"	4"
M	1/2"	1"	1"	1 1/4"	1 1/4"	1 3/4"	2"	2"	2 3/8"	2 5/8"	3"
T	3/8"	5/8"	5/8"	3/4"	3/4"	1"	1 1/4"	1 1/4"	1 1/2"	1 1/2"	1 1/2"



PIÈCE 100-9900-0 100-9902-0 100-9903-0 100-9904-0 100-9905-0 100-9906-0 100-9908-0 100-9909-0 100-9910-0 100-9911-0 100-9912-0

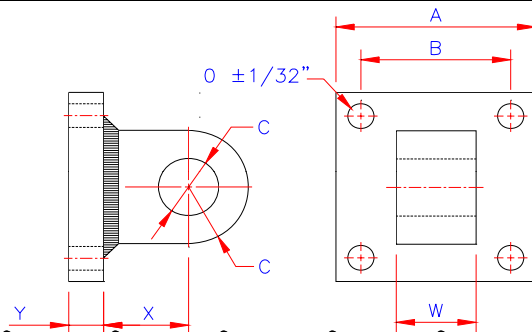
ALÉSAGE BORE	1 1/2"	2"	2 1/2"	3"	3 1/2"	4" 4 1/2"	5"	6"	7"	8"	10"
C	1/2"	3/4"	7/8"	1"	1 1/4"	1 1/2"	1 3/4"	2"	2 1/4"	2 1/2"	3"
CA	1 3/4"	2"	2 1/2"	2 3/4"	3 1/2"	3 1/2"	4 1/2"	4 1/2"	5 3/4"	6 1/8"	7"
F	5/8"-18	3/4"-16	7/8"-14	1"-14	1 1/4"-12	1 1/2"-12	2"-12	2"-12	2 1/4"-12	2 1/2"-12	3"-12
H	13/16"	1"	1 1/4"	1 1/2"	1 3/4"	2"	2 1/2"	2 1/2"	3"	3 1/2"	4"
SS	1"	1 1/4"	1 1/4"	1 1/2"	2"	2"	2 1/2"	2 1/2"	3"	3 1/2"	4"

ATTACHES/BRACKETS



PIÈCE

ALESAGE BORE	1 1/2"	2"	2 1/2"	3"	3 1/2"	4" 4 1/2"	5"	6"	7"	8"	10"
A	2 1/2"	3 1/2"	3 1/2"	4 1/2"	4 1/2"	5"	6 1/2"	7 1/2"	8 1/2"	9 1/2"	12 3/4"
B	1 5/8"	2 1/2"	2 1/2"	3 1/4"	3 1/4"	3 3/4"	5"	5 3/4"	6 1/2"	7 1/2"	9 1/2"
C	5/8"	3/4"	7/8"	1"	1 1/4"	1 1/2"	1 3/4"	2"	2 1/4"	2 1/2"	3"
S	1/2"	5/8"	5/8"	3/4"	3/4"	1"	1 1/4"	1 1/4"	1 1/2"	1 1/2"	2"
T	3/8"-24	1/2"-20	1/2"-20	5/8"-18	5/8"-18	5/8"-18	7/8"-14	1"-14	1 1/8"-12	1 1/4"-12	1 3/4"-12
W	13/16"	1 1/16"	1 5/16"	1 5/8"	1 5/8"	2 1/8"	2 5/8"	2 5/8"	3 1/8"	3 1/8"	4 1/8"
X	3/4"	1 1/4"	1 1/4"	1 1/2"	1 1/2"	2 1/8"	2 1/4"	2 1/2"	3"	3 1/4"	4"
Y	3/8"	5/8"	5/8"	3/4"	3/4"	7/8"	7/8"	1"	1"	1"	1 3/4"



PIÈCE

ALESAGE BORE	1 1/2"	2"	2 1/2"	3"	3 1/2"	4" 4 1/2"	5"	6"	7"	8"	10"
A	2 1/2"	3 1/2"	3 1/2"	4 1/2"	4 1/2"	5"	6 1/2"	7 1/2"	8 1/2"	9 1/2"	12 3/4"
B	1 5/8"	2 1/2"	2 1/2"	3 1/4"	3 1/4"	3 3/4"	5"	5 3/4"	6 1/2"	7 1/2"	9 1/2"
C	5/8"	3/4"	7/8"	1"	1 1/4"	1 1/2"	1 3/4"	2"	2 1/4"	2 1/2"	3"
O	3/8"	1/2"	1/2"	5/8"	5/8"	5/8"	7/8"	1"	1 1/8"	1 1/4"	1 3/4"
W	1/2"	1"	1 1/4"	1 1/2"	1 1/2"	2"	2 1/2"	2 1/2"	3"	3"	4"
X	3/4"	1 1/4"	1 1/4"	1 1/2"	1 1/2"	2 1/8"	2 1/4"	2 1/2"	3"	3 1/4"	4"
Y	3/8"	5/8"	5/8"	3/4"	3/4"	7/8"	7/8"	1"	1"	1"	1 3/4"